



# DATA SHEET

Premium Efficiency Motor: **PEWWE40-18-324T**

**60 Hz**

Document Generated: 31-Jul-2023  
Document ID:

Customer:

MOTOR INFORMATION	
HP	40
RPM	1800
Phase	3
Frequency	60Hz
Voltage	230/460 V
Frame Size	324T
Enclosure	TEFC
Degree of Protection	IP55
Service Factor	1.25
Poles	4
Full Load	1775
Speed	F
Temperature Class	80°C
NEMA Code Letter	G
Duty	S1 / Continuous
Slip	1.40%
NEMA Design	B
Moment of Inertia	5.74 lb.ft.^2
Locked Rotor Time	14 seconds
(Hot) Sound Pressure	71 dB(A)
Number of Starts	2 Cold/ 1 Hot
Max Ambient Temperature	40°C
Max Elevation	1000 m.a.s.l (3300 f.a.s.l)
Mounting	F1
Rotation	Bi-Directional
Area of Classification	Class 1 Division 2 Groups A,B,C,D T3C(160°C)
Inverter Rating	10:1 CT / 20:1 VT PWM
Standard	Type NEMA MG-1
Approvals	CSA-US, CE

EFFICIENCY/POWER FACTOR		
LOAD	EFF	P. F.
100%	94.1	
%	0.859756%	0.8
50%	2	
	94.4 %	0.72

TORQUE		
FULL LOAD	LRT	BD
118 lb.ft.	160 %	250 %

AMPERAGE INFORMATION		
	230V	460V
Full Load Amps	93.7A	46.8A
Locked Rotor Amps	580A	290A
No Load Current	36.2A	18.1A
Usable at 208V	104A	

BEARING INFORMATION	
DE Bearing	6312 C3
ODE Bearing Grease Ty	6311 C3
pe DE Regreasing	SKF LGHP 2
Interval	4000 Hours
ODE Regreasing Interval	4000 Hours

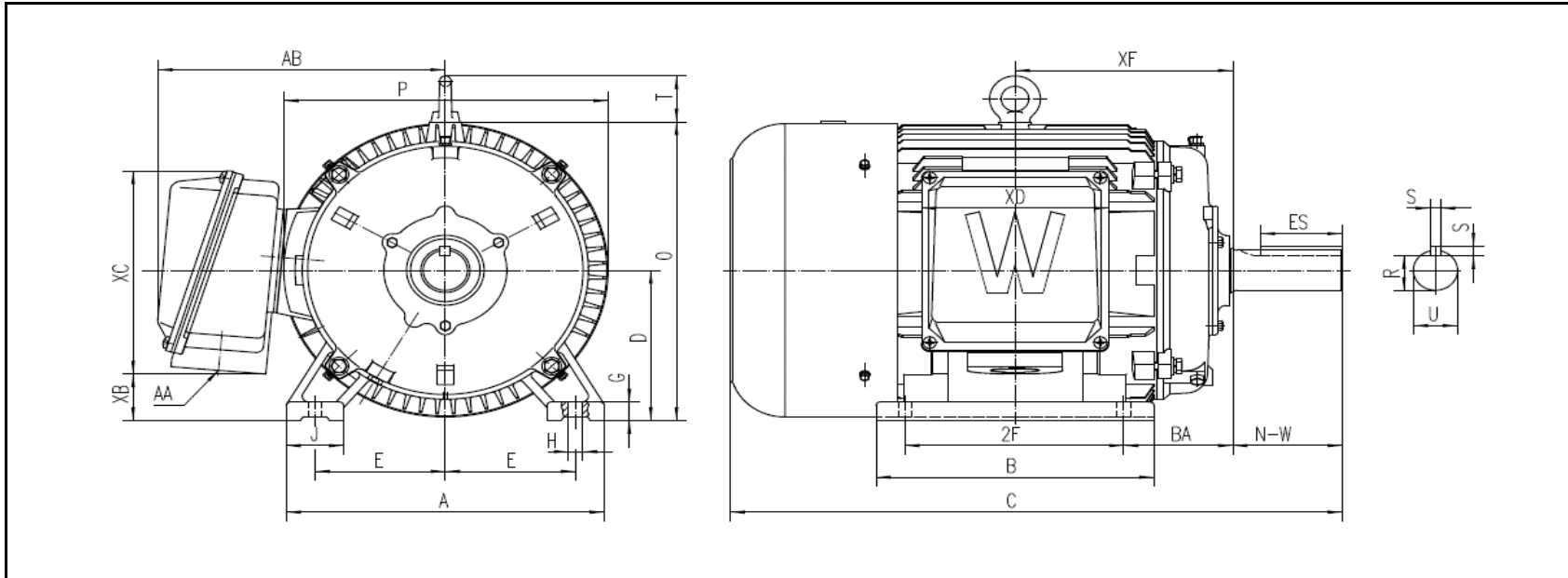
ADDITIONAL DATA	
F2 Suitable	Yes
Shaft Material	1045 Carbon Steel
Connection Diagram	230 / 460 V - 12 Lead Δ
Approximate	513 lbs.

Weight



# MOTOR DRAWING

Premium Efficiency Motor: **PEWWE40-18-324T**



## DIMENSION - INCHES

MOUNTING					A	B	C	D	G	J	P	O	T	AB
E	2F1	2F	H	BA										
6.25	--	10.5	0.66	5.25	15.276	13.346	29.392	8	0.984	2.756	15.751	15.913	2.441	13.813

SHAFT & KEY				
S	ES	R	N-W	U
0.5	3.91	1.845	5.25	2.125

TERMINAL BOX				
AA	XB	XC	XD	XF
2	2.471	10.826	8.976	10.461



# PERFORMANCE CURVES

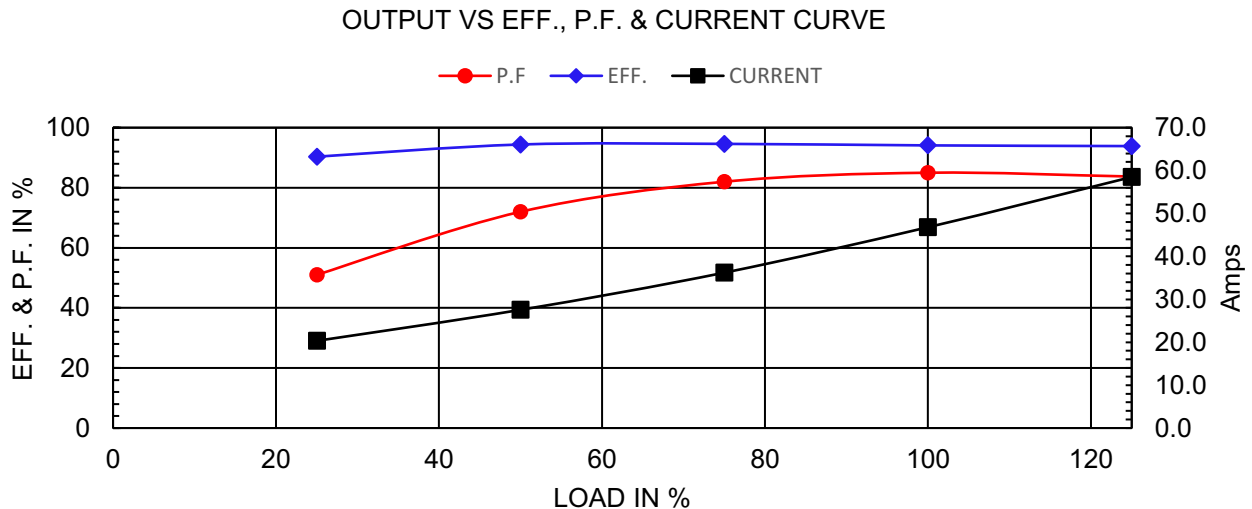
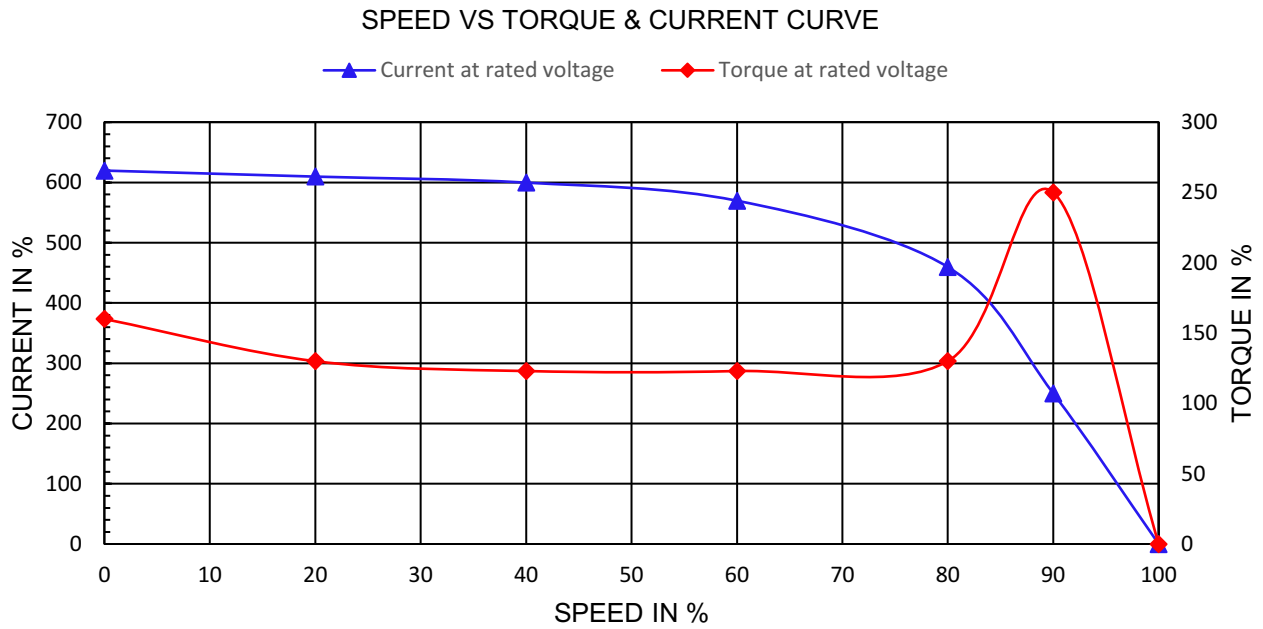
Premium Efficiency Motor: **PEWWE40-18-324T**

Document Generated: 31-Jul-2023  
 Document ID:

Customer:

Motor Type	PEWWE		FL Speed	1775	
Output Rating	40		LRT (%FLT)	160	
(HP) Full Load	118	lb.ft	460 volt FLA	46.8	A
Torque Rotor	5.74	lb-ft^2	230 volt FLA	93.7	A
			BDT (%FLT)	250	

Wk^2





# NAMEPLATE / WIRING

Premium Efficiency Motor: **PEWWE40-18-324T**

Document Generated: 31-Jul-2023  
 Document ID:

Customer:

## SAMPLE NAMEPLATE DATA

		<b>NEMA Premium</b>		<b>3-PHASE INDUCTION MOTOR</b>		259277			CC006A															
Model	<input type="text"/>	Ser No.	<input type="text"/>			<table border="1"> <tr><td>6</td><td>4</td><td>5</td></tr> <tr><td>7</td><td>8</td><td>9</td></tr> <tr><td>12</td><td>10</td><td>11</td></tr> <tr><td>1</td><td>2</td><td>3</td></tr> <tr><td>L1</td><td>L2</td><td>L3</td></tr> </table>				6	4	5	7	8	9	12	10	11	1	2	3	L1	L2	L3
6	4	5																						
7	8	9																						
12	10	11																						
1	2	3																						
L1	L2	L3																						
HP	<input type="text"/>	S.F.	<input type="text"/>	IP	<input type="text"/>	Encl	<input type="text"/>																	
Frame	<input type="text"/>	P.F.	<input type="text"/>	Code	<input type="text"/>	Type	<input type="text"/>																	
Voltage	230/460	Hz	<input type="text"/>	Ins Cl	<input type="text"/>	Rating	°C Amb Cont																	
Amps	<input type="text"/>	RPM	<input type="text"/>	Design	<input type="text"/>	Date	<input type="text"/>																	
Nom.Eff.	FL	% 3/4	% 230/460 V	10:1 CT	20:1 VT	PWM	VFD	1.0SF																
Class I DIV. 2 Groups A B C D		Amb.40°C	DE Brng		ODE Brng																			
Class I Zone 2 IIC		Amb.55°C	Grease type: LGHP 2 (compatible with polyrex)		<table border="1"> <tr><td>4</td><td>5</td><td>6</td></tr> <tr><td>7</td><td>8</td><td>9</td></tr> <tr><td>12</td><td>10</td><td>11</td></tr> <tr><td>1</td><td>2</td><td>3</td></tr> <tr><td>L1</td><td>L2</td><td>L3</td></tr> </table>					4	5	6	7	8	9	12	10	11	1	2	3	L1	L2	L3
4	5	6																						
7	8	9																						
12	10	11																						
1	2	3																						
L1	L2	L3																						
50Hz		HP	V	A	rpm	1.0SF																		
<b>WorldWide Electric Corporation</b>																								

Model	<input type="text" value="PEWWE40-18-324T"/>									
HP	<input type="text" value="40"/>	S.F.	<input type="text" value="1.25"/>	IP	<input type="text" value="IP55"/>	Encl	<input type="text" value="TEFC"/>			
Frame	<input type="text" value="324T"/>	P.F.	<input type="text" value="0.85"/>	Code	<input type="text" value="G"/>	Type	<input type="text"/>			
Voltage	<input type="text" value="230/460 V"/>	Hz	<input type="text" value="60Hz"/>	Ins Cl	<input type="text" value="F"/>	Ambient	<input type="text" value="40°C"/>			
Amps	<input type="text" value="93.7/46.8"/>	RPM	<input type="text" value="1775"/>	Design	<input type="text" value="B"/>	DE Brng 6312 C3				
Nom.Eff.	<input type="text" value="FL 94.1% 3/4 94.6%"/>		ODE Brng 6311 C3							
Class 1 Division 2 Groups A,B,C,D						T3C(160°C)				
						Grease type: SKF LGHP 2				
50Hz		40 HP	200/400 V	110/54.9	A	1475 rpm				