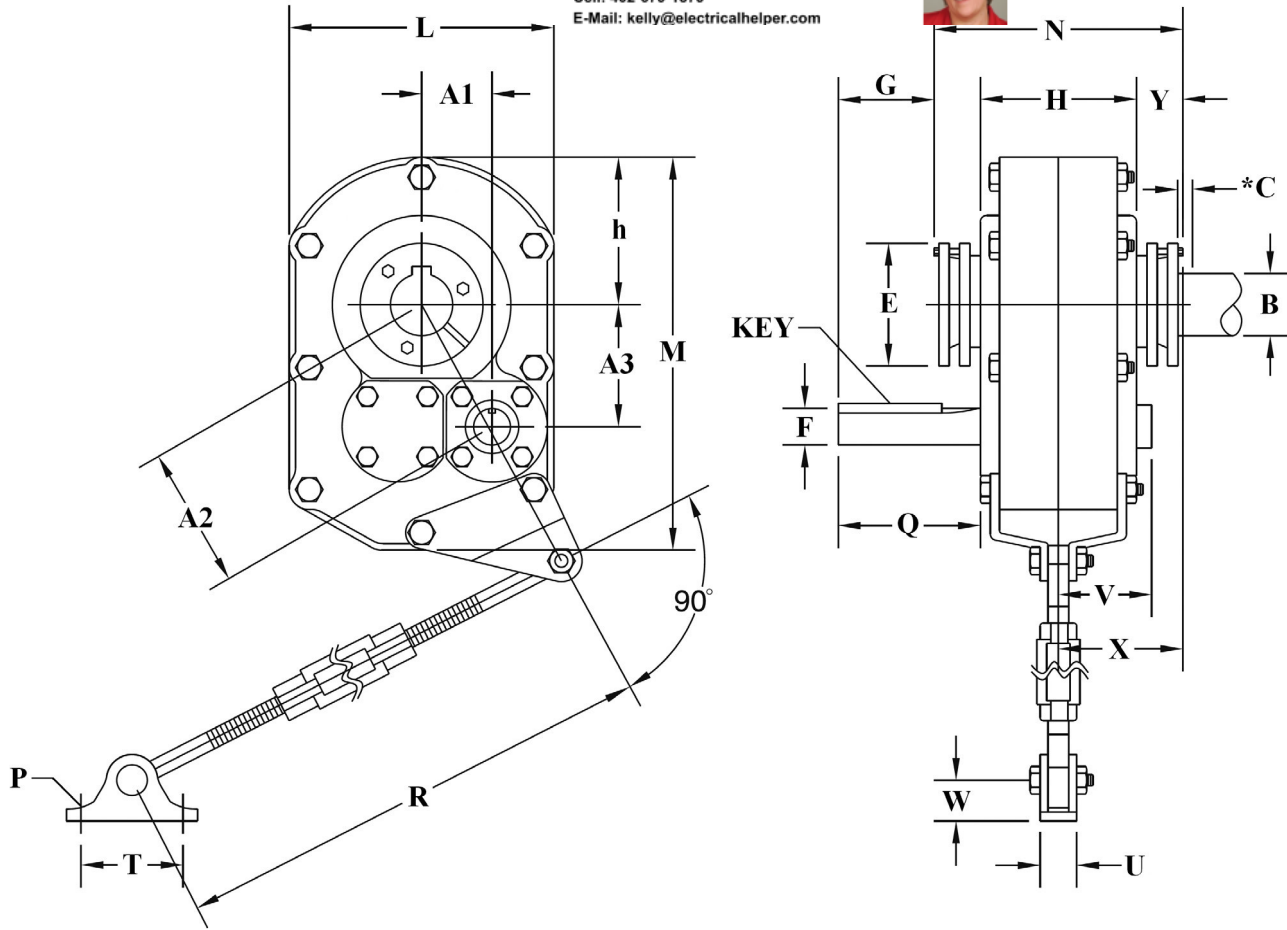




# SMR Series | Dimensions

AC-DC MOTORS :: SALES & SERVICE  
 REWINDING :: CUSTOM CONTROL PANEL

Kelly MacMillan  
 Office Ph: 888-226-4917  
 Fax: 888-226-4917  
 Cell: 402-679-1579  
 E-Mail: kelly@electricalhelper.com



**1**  
 SMR Series  
 Shaft Mount Reducers

All listed dimensions in inches														
Box Size	L M	N	F Key	B Max.	C	E G	W U	X V	Q Y	H	A1 A2	A3 h	R Min. R Max.	P T
2	8.38	7.32	1.125	1 15/16	1.25	4.06	1.06	3.68	3.59	4.56	2.14	3.75	26.94	0.44
	11.41		0.25 x 0.125 x 2.50			2.22		1.4			4.32			
3	9.25	9.22	1.25	2 3/16	1.5	4.38	1.06	4.52	4.34	5.63	2.33	4.17	26.94	0.44
	12.88		0.25 x 0.125 x 2.875			2.34		1.59			4.78			
4	10.38	9.98	1.4375	2 7/16	1.75	4.81	1.75	4.79	5.57	6.13	2.76	4.79	29.19	0.55
	15.13		0.375 x 0.1875 x 4.06			3.44		1.72			5.53			
5	13.13	10.52	1.9375	2 15/16	1.81	5.63	1.75	5.05	5.74	6.31	3.04	5.67	29.19	0.5
	18.31		0.50 x 0.25 x 4.50			3.44		1.91			6.43			
6	15.13	11.53	2.1875	3 7/16	1.81	6.13	2	5.73	6.08	6.88	4.09	6.71	29.19	0.63
	21.31		0.50 x 0.25 x 4.50			3.73		2.3			7.88			
7	18.75	12.85	2.4375	3 15/16	2.06	7.25	2	6.38	6.35	7.75	5.11	8.3	29.44	0.63
	25.94		0.625 x 0.312 x 4.75			3.75		2.5			9.74			
8	20.25	14.03	2.4375	4 7/16	2.06	7.75	3.13	7.04	7.11	8.37	6.03	9.5	30	0.75
	28.25		0.625 x 0.312 x 5.375			4.31		4			11.25			
9	22.63	14.12	2.4375	4 15/16	2.44	8.75	3.13	7.04	9.65	8.12	6.59	10.81	30	0.75
	31.69		0.625 x 0.312 x 7.75			6.63		4			12.66			
10	25.50	15.63	2.6875	5 7/16	2.5	10.04	3.15	7.83	9.10	9.49	6.58	12.50	30	0.75
	35.00		0.625 x 0.312 x 7.875			6.53		4			14.13			
12	31.5	18.49	2.69	6 1/2	2.69	10.95	3.38	9.1	9.39	12	0	22.91	30.5	1.12
	43.5		0.625 x 0.3125 x 7.375			6.12		8.2			3.21			

Dimensions shown in this catalog are for general use only.  
 For an exact drawing on a specific rating, please contact our sales office.



# The Original Shaft Mount Reducer

- **Mounts directly to the driven shaft**
- **Dimensional drop-in for most major brands, including Dodge® TXT™**
- **Designed to accept all TXT™ compatible accessories without issue— take full advantage of your existing safety stock and support your installed base**
- **Box size: 2 - 12**
- **Speed ratio: 15:1 and 25:1**
- **Three-year warranty**

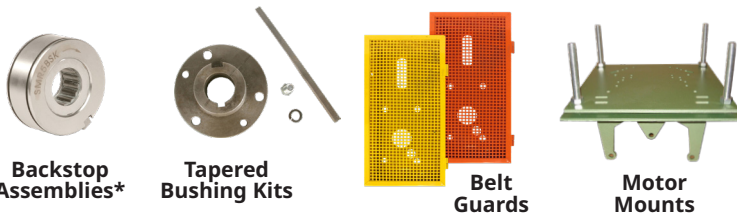


## Construction

- Torque arm included.
- Heavy duty FCD45 cast iron housing for strength and reliability.
- Shaft and gears manufactured from high grade steel, case hardened and precision ground to A.G.M.A. standards.
- Extended gear centers and tooth contact.
- All shafts use metal reinforced double-lip seals to keep oil in and contaminants out.
- Premium tapered roller bearings and precision ground first stage gears for smoother, quieter operation.
- Tapered bushing type (Tapered Bushing Kit sold separately.)

## Industrial Grade Accessories

- WorldWide Electric offers motor mounts, belt guards, tapered bushing kits and backstops\* for WorldWide Shaft Mount Reducer which can also fit other TXT™ and HXT™ compatible series shaft mount reducers.



## Model Number Selection†

Example: **SMR3-15/1**

Box Size	Ratio	Output Bore
2	15:1	1 <sup>15</sup> / <sub>16</sub> "
	25:1	
3	15:1	2 <sup>3</sup> / <sub>16</sub> "
	25:1	
4	15:1	2 <sup>7</sup> / <sub>16</sub> "
	25:1	
5	15:1	2 <sup>15</sup> / <sub>16</sub> "
	25:1	
6	15:1	3 <sup>7</sup> / <sub>16</sub> "
	25:1	
7	15:1	3 <sup>15</sup> / <sub>16</sub> "
	25:1	
8	15:1	4 <sup>7</sup> / <sub>16</sub> "
	25:1	
9	15:1	4 <sup>15</sup> / <sub>16</sub> "
	25:1	
10	15:1	5 <sup>7</sup> / <sub>16</sub> "
	25:1	
12	15:1	6 <sup>1</sup> / <sub>2</sub> "
	25:1	

† Not all combinations indicated by the table(s) may be possible.  
 \* Suitable for use in WorldWide Electric shaft mount reducers only



**Responsive**  
Service & Technical Support



**In Stock Availability**  
Warehouses Nationwide



**Quality Products**  
Competitive Pricing



**Fast Shipping**  
Same-Day Available